

# Carrier-class Airmux-5000i Beamforming PtMP for enterprise and residential

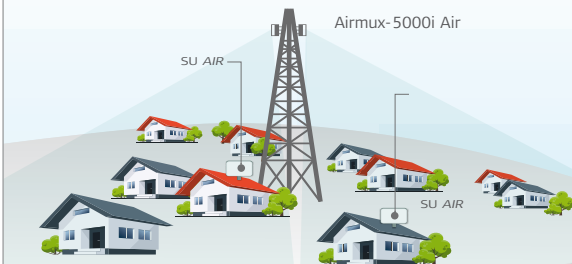


Leveraging RAD's market-leading Airmux-5000i beamforming technology, the new Airmux-5000i series assures revenue growth for residential and enterprise service providers by delivering best-quality service with incomparable resiliency.

Offering mix-and-match base stations for multi-service deployment flexibility, together with innovative operational simplicity, Airmux-5000i assures reduced operational costs for service providers.

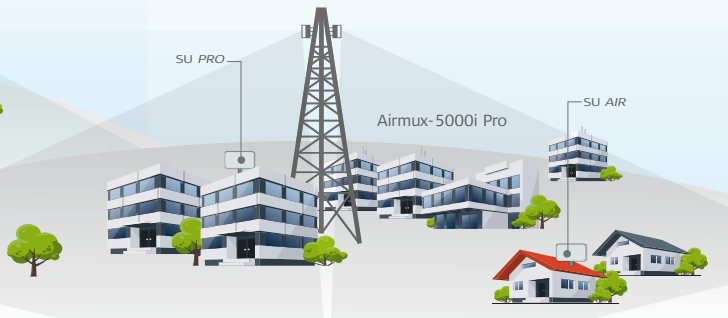
## Airmux-5000i Air | 250 Mbps

For best-effort residential services



## Airmux-5000i Pro | 750 Mbps

For mixed enterprise & residential  
SLA & best effort services



Airmux PtMP carrier-class portfolio consists of Airmux-5000i Air residential base stations and Airmux-5000i Pro multi-service base stations, together with new and powerful SU Pro and SU Air subscriber units.



## Solution highlights

- Incomparable interference immunity, similar to PtP
- Highest capacity for extended range
- Powerful subscriber units – 25 Mbps to 100 Mbps
- Scalable network: TDD synchronization
- High spectrum efficiency – 18 bps/Hz per cell
- Multi-band support: 4.9 – 5.9 GHz
- Simple operation
- Base stations and SUs co-exist with installed base

## Benefits

### Grow your ARPU

- Expand services to lucrative enterprise customers
- Deliver greater capacity packages

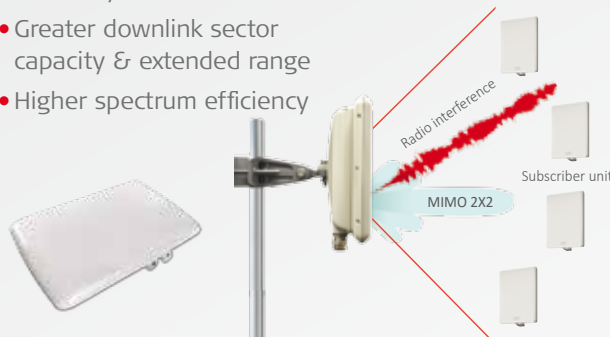
### Lower TCO

- Single PtMP family providing multiple services
- Save on tower costs
- Reduce help desk calls and customer churn

## New Product Offering

### Airmux-5000i Air & Airmux-5000i Pro Bi-Directional Beamforming Base Stations

- Incomparable uplink interference immunity, similar to PtP
- Greater downlink sector capacity & extended range
- Higher spectrum efficiency



### Carrier Class High Capacity Subscriber Units

- Pay as you grow – 25, 50 & 100 Mbps
- High durability (IP67 enclosure)
- Compatible with all base stations



## Innovative Operational Simplicity

RAD's product offering includes the Airmux in-field application tool, designed to simplify and speed up the installation process and a new and innovative small form factor slide-on antenna to increase gain.

### Turbogain Slide-On Antenna

- Double the service range



### Airmux Application

- Enable automated installation, alignment & commissioning
- Simple, fast and precise installation

