



# RAD Radio Planner - Introduction



Presented by:

**Ariel Cohen**

Technical & Product manager – Radio solutions

RAD Data Communications



data communications

# Introduction



data communications

*RAD's RF Planner (R-Planner) is a user friendly WEB application*

*It offers a professional platform to design & analyze an RF network with integrated Analysis Tools, Built-in Report Generator and complete product DB access*

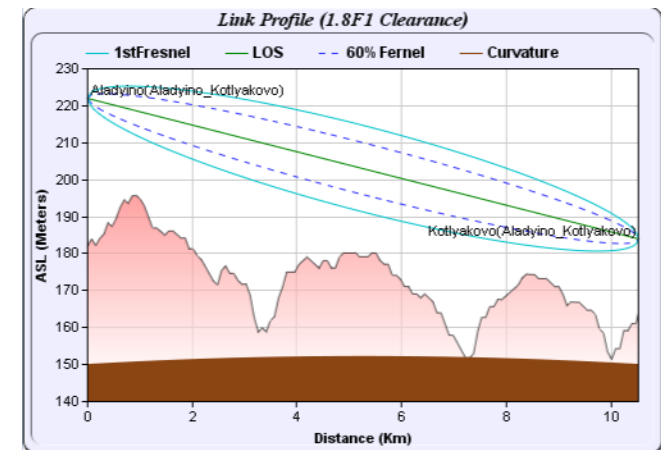
*With Google Earth Add-In & .NET included, planning sites & radio links is easy and fast*

# Highlights



data communications

- Supports RAD's complete product line (PtP and PtMP radio systems)
- User-friendly 3D appearance
- Online (WEB) Application
- Product Portfolio: easier & faster Lookup
- Site Properties On-Demand Display
- Radio Planning Tools
- Radio Analysis Tools
- Easy-Share: Export & Import
- Planning Report (Word 2007 / 2010 Format)



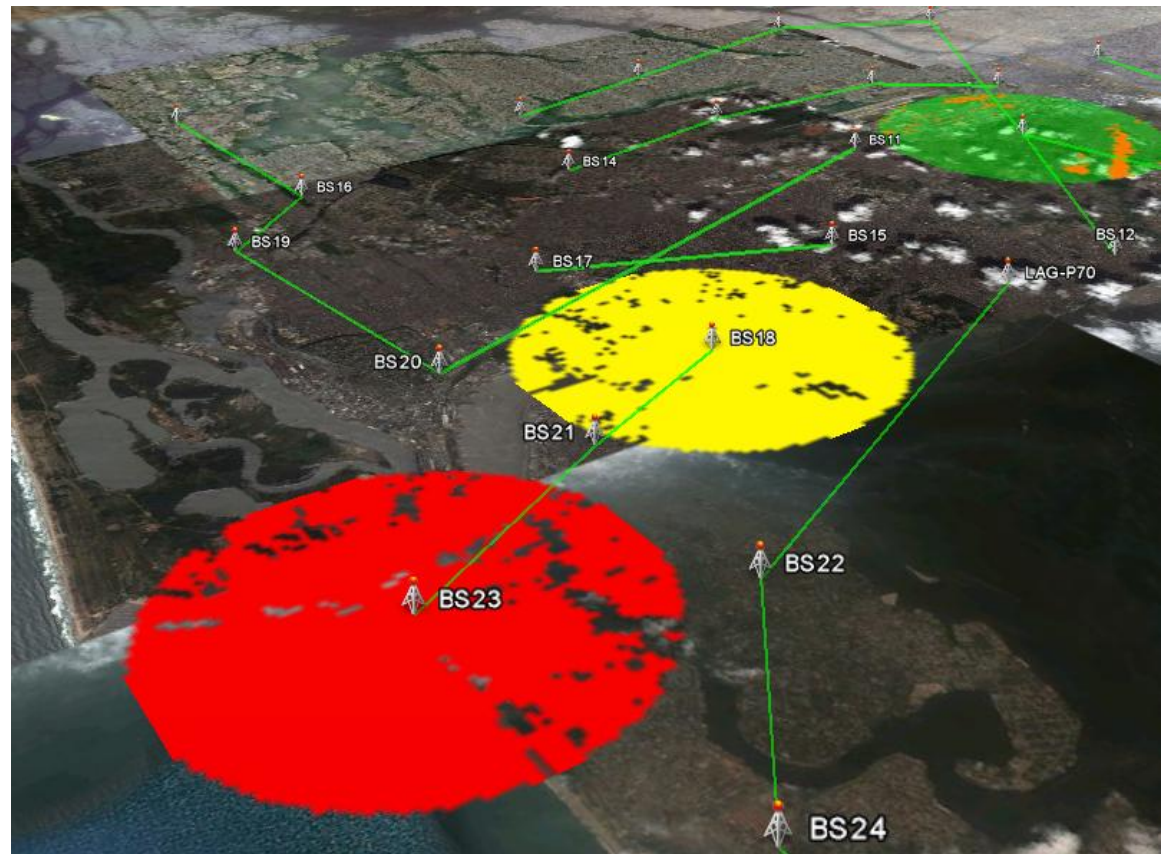
# Radio Analysis Tools

- LOS Coverage
- Link Extrude / Intrude
- Profile Analysis
- Mutual Interference

Line of Sight coverage can be configured to display 360deg coverage and/or sector areas

Every LOS display can be configured by the user:

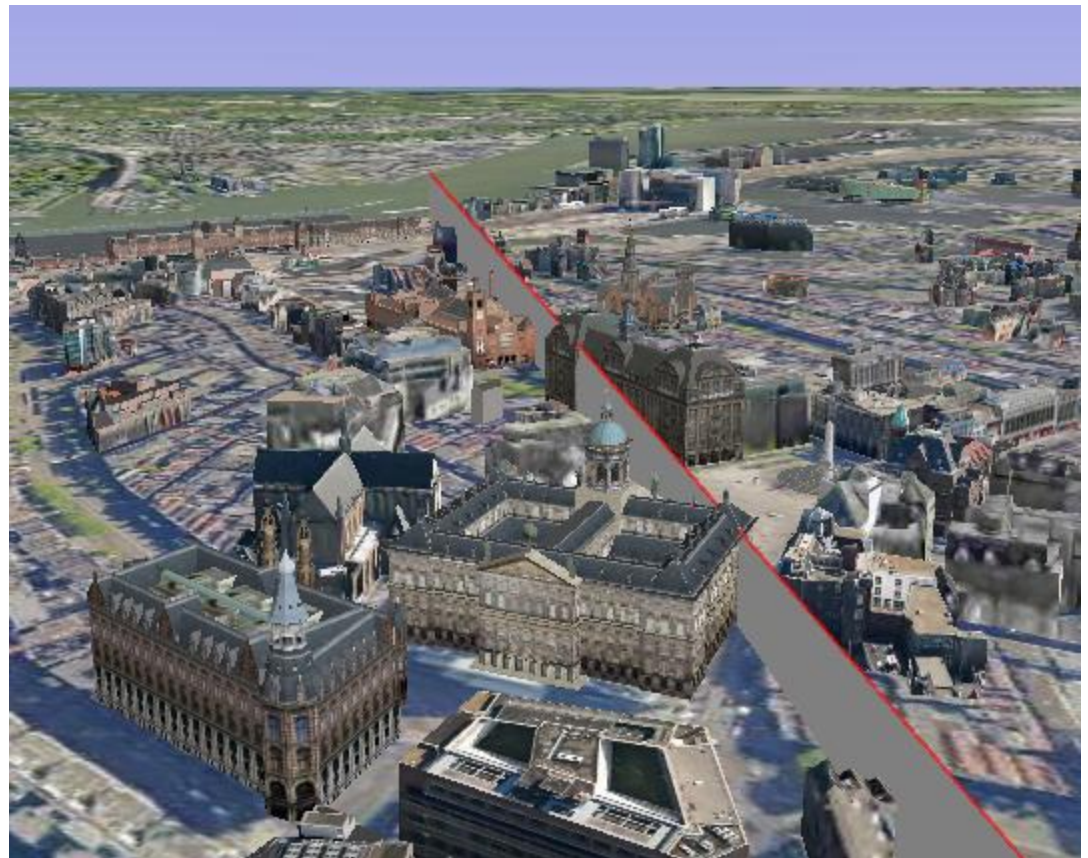
- ✓ Dedicated color & opacity
- ✓ Radio height (local & remote)
- ✓ Radius



# Radio Analysis Tools

- LOS Coverage
- Link Extrude / Intrude
- Profile Analysis
- Mutual Interference

Radio links can be displayed as 3D Walls for better LOS analysis

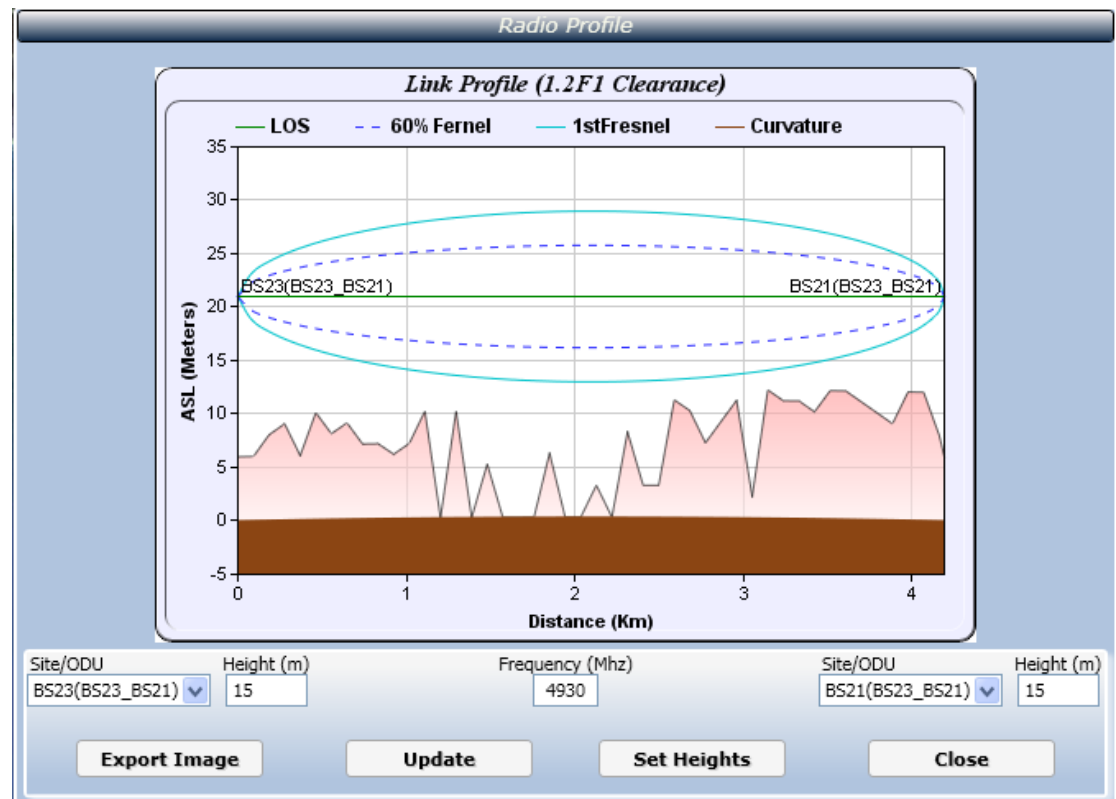


# Radio Analysis Tools

- LOS Coverage
- Link Extrude / Intrude
- Profile Analysis
- Mutual Interference

Fresnel zones and clearance factor and displayed per link

To improve the link availability, users can edit the radio link heights and frequency as well





# Radio Analysis Tools

- LOS Coverage
- Link Extrude / Intrude
- Profile Analysis
- Mutual Interference

Probable mutual interferences are displayed in a single window to allow faster decision making and editing

ODU Name	Interferences	Properties		
<b>Aladyino</b> Aladyino(Aladyino_Mogor')	Interfering ODUs	Edit		
<b>Aladyino</b> Aladyino(Aladyino_Kotlyakovo)	Interfering ODUs	Edit		
	Interferer		Interference	Properties
	Mogor'(Aladyino_Mogor')		-94.64dBm	Edit
	Kotlyakovo(Kotlyakovo_Plyuskovo)		-95.2dBm	Edit
	Glybovka(Glybovka_Aladyino)		-99.57dBm	Edit
	Baklan'(Mogor'_Baklan')		-103.94dBm	Edit
Plyuskovo(Kotlyakovo_Plyuskovo)	-68.29dBm	Edit		
<b>Aladyino</b> Aladyino(Glybovka_Aladyino)	Interfering ODUs	Edit		

# Analysis using Radio Layers

## Radwin Radio Layers

- CBW
- Height
- RSSI
- Frequency
- Interference
- RFP



## Radwin Radio Layers

- CBW
- Height
- Frequency
- RSSI
- Interference
- RFP



## Radwin Radio Layers

- CBW
- Height
- RSSI
- Frequency
- Interference
- RFP





# Enhanced Report Generator



data communications

- Easy to edit: 2007 / 2010 Word Formats
- The report includes:
  - » Site Coordinates
  - » Plan Image
  - » Link Budget Analysis
  - » Frequency Assignment Analysis
  - » Service Evaluation
  - » Your own Brand Logo
  - » Bill of Materials



**Thank You  
For Your  
Attention**



data communications

[www.rad.com](http://www.rad.com)